



## Printing Solutions For Enterprise-Wide Applications

- Bar Code Systems Printing
- Information Systems Printing
- Mission-Critical Printing Management
- Mobile/Wireless Printing Systems
- Printer Consumables & Supplies
- Bar Code & Integration Software
- Nationwide Service & Support

The digital age and wireless technology have extended information technology to the farthest reaches of a business. However, rather than eliminating the business world's dependence on printers, these advances have made the development of real printing solutions more demanding and challenging than ever.

That's why more and more businesses rely on PEAK Technologies to turn their printing challenges into a competitive edge.

From dot-matrix printers to the most complex wireless printing application, there's no more experienced provider than PEAK. We've been delivering real-world printing solutions across all industries for more than twenty years. Our strong relationships with the industry's leading manufacturers, combined with our vendor independence, ensures that you get the right printer for your specific needs.

What's more, PEAK's extensive nationwide service organization provides unsurpassed printing expertise, with teams of industry-specific specialists for nearly every business sector.

From hardware, software and consumables, to integration, installation, service and support, PEAK's full-circle printing solutions simply mean business.

### Bar Code Systems Printing

All bar code systems are not created equal. Matching the right bar code technology to the application is essential for success. That's why PEAK offers the industry's broadest selection of label and bar code printing technologies. With PEAK, you can rest assured you'll have the right tool for the job.

We consider far more than your technological environment. We evaluate the physical environment to which your label or document will be exposed, as well as document format, image durability, printer durability, resolution, speed, and communication requirements. PEAK offers cost-effective bar code printing solutions for every application, from economical low-volume output to rugged, industrial strength bar code printing systems.

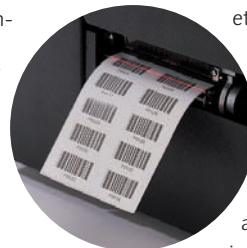
Of course, most organizations are not starting from square one. Proprietary code and legacy applications need not be a barrier to implementing best-of-breed printing solutions. PEAK can seamlessly integrate state-of-the-art bar code printers into virtually any proprietary language environment.

More and more retailers and manufacturers are requiring vendors to adhere to strict labeling guidelines as integral components of the automated supply chain. Label size, shape, content and layout; bar code symbology; and print quality must all comply.

Organizations facing these new compliance labeling guidelines can count on PEAK for help in meeting and exceeding manufacturer requirements. PEAK can also show you how automatic bar code validation ensures every label meets bar code symbology standards.

### Typical Label Applications:

- Compliance Labeling
- Inventory & Asset Labeling
- Shipping Labels
- Material Handling
- Work-in-Process
- Receiving & Cross-docking
- Hazardous Material Labeling
- Shipping Documents
- Product Marking



## Information Systems Printing

### Line Matrix

From bar codes to invoices to multi-part forms, the formidable line matrix printer has been the workhorse of information systems processing for more than 20 years. While the fundamental technique remains, continual improvements in speed, reliability, print quality, ease of operation and noise reduction make today's line matrix printers appropriate for all environments.

Whether it's a tough industrial environment or a quiet front office, line matrix printing is the standard for low-cost printing of high-quality labels, reports, bar codes or multi-part forms. High-volume, high-reliability, and a low total cost of ownership have always been and remain the hallmarks of line matrix printers.

And now with speeds up to 2000 lpm and dramatically lower maintenance costs, line matrix printing solutions also offer an excellent replacement option for old band printers.

#### Typical Line Matrix Applications:

- Single and Multi-Part Forms
- Batch Bar Codes and Labels
- Pick Lists and Shipping Documents
- Payroll and Invoices
- Factory Orders
- Inventory Reports
- Shipping Documents
- Specialized Bar Codes and Labels

PEAK's unsurpassed printing expertise is further strengthened by our parent company, Moore. Recognized as the world's leading business forms innovator, the Moore product line includes paper-based products, electronic forms, pressure sensitive products and systems, self-mailers and forms processing equipment. Whatever your industry or application, you can rest assured that PEAK and Moore are uniquely qualified to deliver forms, functionality, printers and performance to enhance your business processes.



### Laser

#### Cut Sheet Laser

PEAK offers a complete range of quality network laser printers that deliver high-resolution output for crisp text and graphics... from affordable low-volume models to high-speed printers delivering performance, capacity and durability. Letter or ledger, light-weight or cover stock, simplex or duplexed, PEAK cut sheet laser printing solutions print on a variety of sizes and materials, and offer advanced binding options including stapling, hole punching and saddle-stitching.

#### Typical Cut Sheet Laser Applications:

- Laser Printed Forms
- Bar Codes
- Network Printing
- Secure Printing
- Booklet Printing
- Distributed Printing

While known for extremely crisp output, cut sheet laser printers also offer a surprisingly low overall cost of ownership. Many corporate buyers are discovering that once consumables and long-term maintenance costs are made part of the equation, PEAK cut sheet laser printers can offer considerable savings compared with the overall costs of other printing technologies.

#### Continuous Form Laser

For applications requiring crisp laser clarity and the added demands that only continuous-form printing can provide, the continuous-form laser printer is the answer. Paper that's too long, short, thick, or thin for a cut sheet laser printer, can be handled with precision by continuous form laser printers. Thick labels, tickets and tags, high-speed forms, reports and envelopes, bar codes, continuous strip charts, and signs/banners are only some of the applications that print with ease on continuous form laser printers. Continuous form laser printers excel in handling batch reports, labels and special forms.



#### Typical Continuous Form Laser Applications:

- Customer Billing
- Mailing Labels
- Hang Tags
- Drum Labels
- Shipping Labels
- Plastic Membership Cards
- Mylar Product Labels
- Forms/Reports
- Form/Label Combinations



### **Serial Dot Matrix**

If your application requires multi-part form printing, PEAK dot matrix printing solutions can solve your toughest printing problems and automate virtually all of your paper handling functions. We offer a broad range of dot matrix printers with speeds up to 800 cps for use in various markets including manufacturing, distribution, transportation, government and healthcare. PEAK dot matrix solutions offer greater legibility and unsurpassed reliability for applications ranging from high-volume report and forms printing to print on-demand in distributed locations. Users can even change print jobs (up to 3 different forms) without reloading and aligning forms... automatically. Whatever your dot matrix printing requirements, PEAK has the right printer to meet your needs.

### **Network Printing & Management For Mission-Critical Printing**

If your printing application is crucial to your business operations, PEAK is vital to your printing solutions. The failure of a mission-critical printing system can shut down an operation from minutes to hours. A minor but undetected overnight incident could bring production to a standstill until discovered the next business day. In a perfect world, network administrators would receive instant feedback from printers the moment a problem occurs. In mission-critical operations, leaving problem detection to chance observation is not an option.

With PEAK you leave nothing to chance. PEAK wired and wireless network printing and management solutions make real-time, full-time printer monitoring a reality. Now network administrators use networked PCs or networked wireless devices to monitor, control and configure network printers. PEAK networked systems provide the ability to link a variety of mission-critical printers and share valuable information to ensure that crucial business resources are up, online and operating... wherever and whenever your mission demands peak performance.

### **PEAK's Premier Printer Partnerships**

PEAK has long-established partnerships with the world's top manufacturers including:

- AMT Datasouth
- Datamax
- Intermec
- Kyocera
- Printronix
- Printek
- PSI
- Zebra

### **Mobile/Wireless Printing - Printing Where Business Happens**

Where people go, business happens. Commerce doesn't stop at the end of a cable and neither should your business. Restricting printing operations to "hard-wired" applications can slow business operations, hinder employees and customers, and increase liabilities and limit opportunities.

At PEAK we're helping more and more customers use wireless connectivity to revolutionize their printing capabilities. PEAK mobile printing solutions offer the most convenient and efficient bar code printing ever available. We offer best-of-breed technology with the very latest wave of smaller, longer lasting mobile printers and a variety of connectivity options including complete 802.11b compatibility.

PEAK mobile printing solutions can allow the user to select the data communications method that best suits their particular application. Using just one printer, users can select wired or wireless communications, including network radio, short-range radio, or infrared.

#### **PEAK Wireless Solutions Provide:**

- Freedom to explore and deliver new competitive advantages
- Considerable cost-savings in wiring and relocation expenses
- Rapid return on investment and nearly unprecedented productivity gains





# Printing Solutions For Enterprise-Wide Applications

## PEAK Consumables

The right consumables are vital to the performance of your printing system. And only PEAK has a nationwide team of experts focused exclusively on matching the right consumables to each customer's applications. From warehousing to manufacturing, medical centers to laboratories; shipping and compliance labels, jewelry tags or pharmaceutical labels; in a clean stock room or in a harsh environment with long-range scanning or temperature extremes, PEAK delivers a label solution that's precisely right for your application.

We offer pre-purchase matching and testing, printhead replacement programs, our own line of PEAK Performance Ribbons, as well as the industry's most comprehensive range of stock and custom labels.



## Bar Code Label & Printer Integration Software

From compliance labeling to enterprise-wide and stand-alone printing, PEAK offers proven software solutions for virtually every printing application. PEAK bar code labeling software lets you design and print professional bar code labels, quickly and easily. Our printer integration software lets you access and automatically print labels from virtually any database. PEAK printer integration maximizes the performance of your new printers and can extend the life of your legacy systems to achieve maximum ROI on existing hardware and software.

## PEAK Systems Integration

PEAK Technologies' experience, expertise and resources provide our customers unsurpassed strategic systems integration services for bar code data collection and printing solutions. We offer a variety of consulting, project management, systems engineering and software engineering services tailored to your industry, application, budget and business goals.

## PEAK Service

PEAK is one of North America's largest printer maintenance organizations. With more than 350 dedicated service personnel, PEAK offers nationwide coverage, manufacturer-certified technicians and an unsurpassed level of support. From depot repair to telephone support to complete onsite installation and maintenance, PEAK has a service-level offering to meet your needs.

For more information on PEAK Service, as well as PEAK's entire range of products and services, visit us on the web at [www.peaktech.com](http://www.peaktech.com).



**Corporate Headquarters**  
PEAK Technologies, Inc.  
10330 Old Columbia Road  
Columbia, Maryland 21046 USA  
Tel: 888-ASK-PEAK  
Fax: 410-309-6219  
E-mail: [info@peaktech.com](mailto:info@peaktech.com)  
[www.peaktech.com](http://www.peaktech.com)

© Copyright 2006 PEAK Technologies, Inc.  
PSDS1209