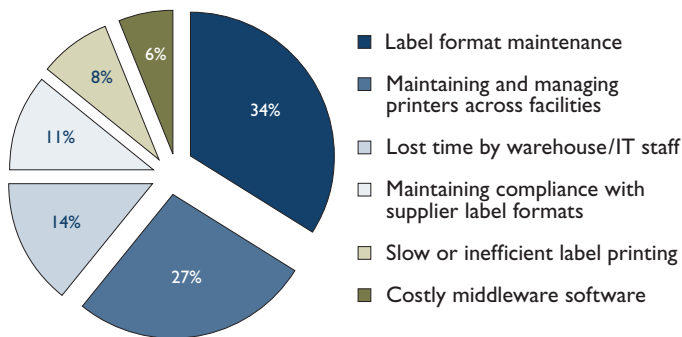


Optimizing Enterprise Industrial Printing Processes in SAP®

Key strategies for enabling innovation in the age of smart printing systems

Bar code and RFID printing from SAP remains a major challenge for organizations, with operational inefficiencies and improper print management only compounding the problem. Budgetary restraints influenced by the global economic recession and intensified competition are causing many companies to reevaluate their strategies for industrial printing in the SAP environment.

A recent survey of more than 300 SAP end-users cited the following as their biggest business problem in SAP label printing today:



As enterprises reevaluate their printing strategies, each is faced with a variety of options to output information in bar code format. Key factors in determining the most appropriate approach for label printing include the specific enterprise IT label printing environment, as well as label output requirements.

PREVALENT MARKET APPROACHES TO SAP PRINTING

A variety of methods of bar code printing within an SAP environment are available today, namely:

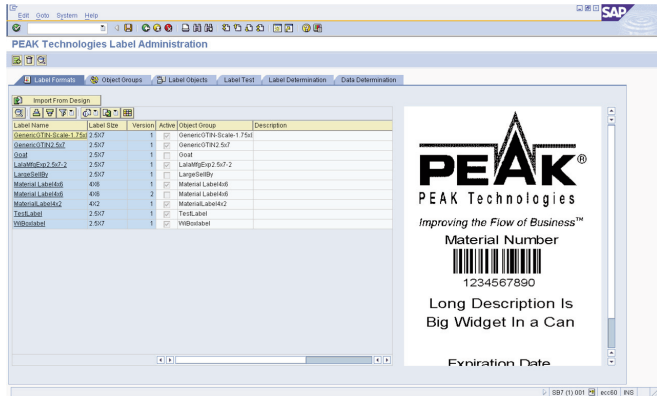
- **Hard Coded Solution:** SAP-centric, highly customized non-scalable approach. It requires IT professionals to perform maintenance, which is seen as a disadvantage.

- **SAP Upload Method (“SAPscript”):** Perceived to be simplest method to print bar codes from SAP. Here, labels are designed using 3rd-party software and uploaded into mySAP business suite through SAPscript programming. Like other customer-enhanced printing in SAP, some ABAP programming is required upfront to enable convenient output. Significant coding is required and any changes in label design or printer configuration require transport between development and production systems.
- **Middleware (“3rd-party packages”):** Involves using 3rd-party output management software for form and label design. SAP output is converted into printer recognizable bar codes and commands. Separation of a print management system from an application server allows for improved performance and creation of a print architecture independent from the native SAP print spooling system.
- **Smart Forms and Adobe Forms:** Organizations using SAP NetWeaver may consider using the latest SAP forms technology, Interactive Forms. While this approach allows labels to be designed in SAP with standard tools, it makes poor use of internal printing processes because label formats and graphics are sent with each label.

ENTERPRISE PRINTING FOR SAP: PEAK AUTOMATION CONTROLLER

PEAK Technologies’ PEAK Automation Controller for Enterprise Printing (PAC-EP) successfully addresses key challenges faced by enterprises, while at the same time, enhances and optimizes SAP label printing.

PAC-EP enables businesses to maintain a SAP-centric supply chain application environment through the seamless deployment, integration and management of RFDC, voice applications, label applicators and printers, RFID devices, and discrete warehouse and shop floor devices into an enterprise’s existing infrastructure.



Features and Benefits of PAC-EP for SAP Solutions

The PAC-EP is differentiated from other solutions in the market by its elimination of requirements for 3rd-party software printing solution middleware. Critical to the solution is bi-directional communication between the SAP system and printers, providing accurate print job status and real-time notification user alerts.

This message-based, event-driven rules engine offers enterprises a new approach to simplified barcode label printing and management and provides the following functionality:

- Monitor, test, troubleshoot and reset label printers/applicators from a central control point
- Minimize downtime by storing all necessary label formats and images on the printer
- Reduce bottlenecks by enabling the re-redirect of labels to other available printers
- Inform users and supervisors of any printing errors or potential errors, and validate production line processes
- Identify which printer/applicators are statistically unavailable and view total utilization information

The PAC-EP Advantage

The PAC-EP solution is highly flexible and supports unlimited types and quantities of label and barcode symbologies. Because PAC-EP is built using the SAP ABAP programming language, IT staff can continue to expand its use without specialized training or support.

- PAC-EP is a Powered by SAP NetWeaver certified application that resides on a SAP NetWeaver application server
- Architected on a message-based, event-driven rules engine that enables business analysts to simply assign handlers to events without being concerned with the complexities of the communications to end-devices and systems
- Internally supportable and extensible by existing IT staff
- Reduces implementation, training, and ongoing support costs for end users by providing an SAP-centric solution, which allows customers to leverage existing investments in infrastructure, licenses, and personnel

CONCLUSION

While a variety of different approaches for enabling bar code output in SAP systems are available today, recent survey results indicate that major business problems still exist in SAP label printing in the areas of label format maintenance and label printer management.

PEAK Technologies' PAC-EP solution was developed to address the gaps in the current solutions on the market while providing enterprise customers with high value printing within the SAP environment by leveraging current SAP solution investments in infrastructure, licenses, and personnel.



PEAK Technologies, Inc.
 10330 Old Columbia Road
 Columbia, Maryland 21046 USA
 Tel: 888-275-7325
 Fax: 410-309-6219
 E-mail: info@peaktech.com
www.peaktech.com