

# MCL-NET V3

## DEPLOYMENT FOR ENTERPRISE MOBILE COMMUNICATIONS



Maximize mobile worker productivity and operations data accuracy with real-time host access over any IP-based network — WiFi, GPRS, LAN. Support concurrent, networked users for real-time or on-demand mobile applications.

### FEATURES

#### **Ease of Installation**

MCL-Net is simple to install. Install MCL-Net and use the default settings, or take full advantage of MCL-Net's features to configure it to your needs..

#### **Minimum Network Traffic**

MCL-Net has minimal impact on your existing system resources.

#### **Version Control**

MCL-Net ensures that you have the correct version of your mobile worker application running on your terminal.

#### **Scalability**

MCL-Net can handle the mobile worker transactions of any enterprise — small or large.

### **MCL-Net**

A component of MCL-Collection, MCL-Net handles all the communications of your MCL mobile worker applications. It is essential to the deployment of mobile computers in networked, concurrent user environments.

MCL-Net interfaces with all MCL-Bridges enabling your mobile worker applications to integrate seamlessly with multiple enterprise systems simultaneously — BackOffice applications, ODBC compliant databases, WMS, or ERP systems.

The flexibility of MCL-Net and MCL-Bridges give your mobile worker applications the ability to share business data between multiple systems while ensuring system coherency and data integrity across your entire enterprise.

### **Why MCL-Net?**

With the capacity to handle up to 62,500 simultaneously connected mobile computers running MCL mobile worker applications, MCL-Net is designed for enterprise deployments of mission critical and on-demand applications.

Optimized for large distributed system deployments, MCL-Net is also efficient for small, localized deployments of mobile workers.

### **Advanced Features**

MCL-Net offers many advanced features designed to maximize your mobile workforce productivity while minimizing your operating costs.

### ***Ease of Installation***

MCL-Net is very easy to install. It may even be deployed remotely. You can take a very hands-off approach to MCL-Net and simply install it with its default settings. Alternatively, if you want to take advantage of MCL-Net's more sophisticated features, you can configure it to suit your environment.

### ***Minimum Network Traffic***

MCL-Net provides exchange for MCL applications, data files, images, label formats, and data records between host systems and mobile computers. Since only data and applications are ever exchanged, MCL-Net minimizes network traffic.

### ***Version Control***

MCL-Net offers application updating for mobile computers. Individual mobile computers, groups of mobile computers, or all mobile computers on the MCL-Net network may be identified as target devices to receive a new version of an application.

### ***Scalability***

MCL-Net is extremely scalable. Each instance of MCL-Net can handle up to 250 mobile computers, and each server can launch up to 250 instances of MCL-Net.



### Flexible Network Architecture

You architect your communications network for maximum benefit for your business.

### Guaranteed Data Delivery

MCL-Net brings the efficiency of a connectionless transport protocol while ensuring your data integrity with guaranteed data delivery.

### Extremely Low Resource Usage

MCL-Net easily handles millions of business transactions daily, while minimizing resource usage.

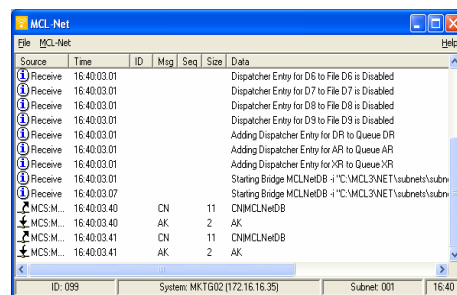
### Minimum Latency

MCL-Net is designed to minimize communications latency whichever network medium you use.

From a minimum configuration that handles up to only 5 mobile computers, to a maximum configuration of up to 62,500 mobile computers per server, your MCL-Net configuration can expand over time to suit your business' growth.

### Guaranteed Data Delivery

MCL-Net uses several layers of communications protocols to provide exceptionally fast and guaranteed data delivery between your mobile computers and your host systems. It uses an ACK/NAK protocol with packet level retries and checksums over UDP/IP communications.



### Flexible Network Architecture

Servers running instances of MCL-Net may be co-located or geographically distributed. Geographically separated MCL-Net servers may be connected over your corporate LAN or over the internet. Your MCL-Net may even be at a completely different physical location than your mobile computers. One instance of MCL-Net can handle your WLAN communications; another can handle your GPRS or GSM WWAN mobile worker communications.

### Very Fast Response Times

MCL has conducted tests to measure the time to handle two consecutive transactions. MCL-Net's processing is so fast that the interval can not be measured by MCL's server's system clock. According to the system, 0% CPU time is spent by MCL-Net to process the two transactions.

### Minimum Latency

MCL-Net is designed to handle a variety of network mediums such as wired, wireless, and satellite, or more specifically, Ethernet LAN, Internet, WLAN, GSM WWAN, and GPRS WWAN. Each of these mediums has different inherent communications delays. MCL-Net is optimized to minimize communications latency on whichever network medium you use.

### Extremely Low Resource Usage

One customer's load test exemplifies MCL-Net's efficiency. The load test was performed at the customer site. The customer requirement was to handle, at peak times, 4 million transactions in a 24-hour period from 2500 mobile computers. A load test was set up to simulate 1000 mobile computers generating 3 million transactions in a 24-hour period. The result was that MCL-Net used 1% of the CPU time while the customer's Oracle database used 80% of the CPU time to handle the same transactions.

### MCL-NET MINIMUM REQUIREMENTS

Specification	Requirement (min/recommend)
Operating System	Windows XP Windows 2000 Windows 98
Processor Speed (Mhz)	233/300 133 or higher 486XD 66MHZ
RAM (MB)	64/128 64 16/24
Free Hard Disk Space (MB)	80 80 80
Display	800/600 VGA or higher VGA or higher

Copyright © 2008 MCL Technologies. All Rights Reserved

Microsoft, Windows, Windows XP, Windows 2000, and Windows 98 are trademarks or registered trademarks of Microsoft Corporation in the United States and/or other countries.

All other trademarks are the property of their respective owners. All specifications, terms and descriptions of products and services are subject to change without notice or recourse.

### MCL Technologies

Chaussée de Bruxelles 572  
1410 Waterloo • Belgium  
Tel.: + 32 2 724 35 00  
Fax: + 32 2 724 35 04  
<http://www.mcl-collection.com>



Marketing@mcl-collection.com  
Support@mcl-collection.com  
Competence.USA@mcl-collection.com  
Competence.UK@mcl-collection.com  
Competence.NL@mcl-colleciton.com