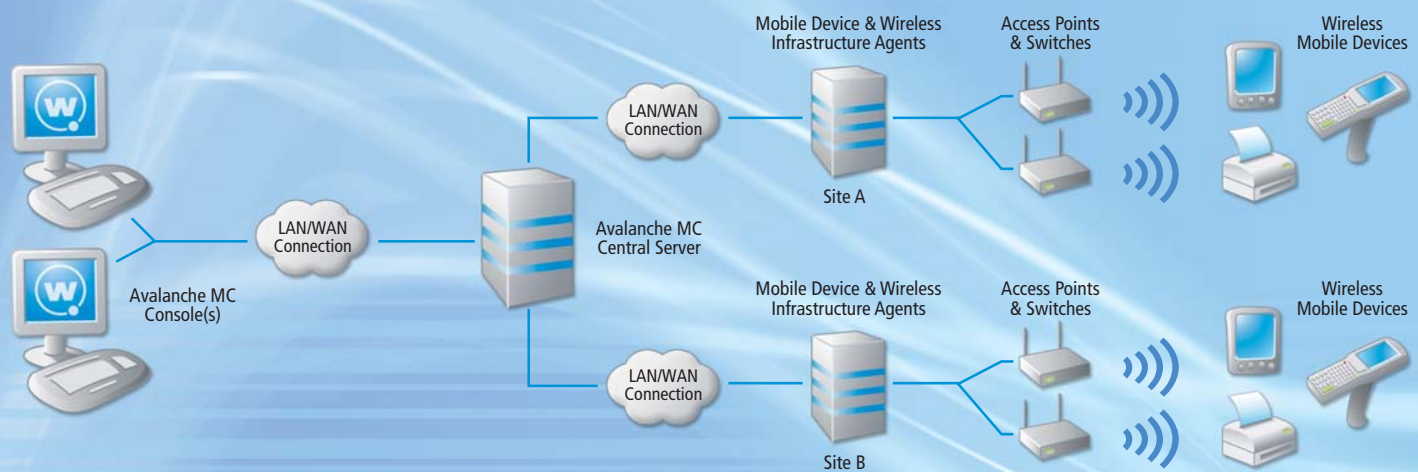


## Increase your network's efficiency with Avalanche Mobility Center

Wireless mobile applications can greatly increase your operational efficiency. Many businesses are discovering that the delivery and real-time capture of data through a wireless network increases productivity levels unattainable with batch or static systems.

To ensure this higher level of productivity care must be taken to maintain the system with special attention on software upgrades, data security, and diagnostic capabilities. Avalanche Mobility Center (MC) provides comprehensive management of each element of a wireless system, provisioning and maintaining all major brands of handheld mobile computers, wireless infrastructure devices and peripheral items such as printers and barcode scanners.

Avalanche MC also makes your network more efficient by enhancing its overall reliability and security. Avalanche MC can detect and correct problems before your phone starts ringing. You'll have remote diagnostic and troubleshooting tools that remedy faults without site visits.



### Superior Flexibility for Your Network

Avalanche MC increases your network's flexibility by managing hardware from multiple vendors. When rolling out the network or adding new access points, switches, handheld devices and peripherals, Avalanche MC automatically discovers the hardware and applies the initial configurations and profiles. Its unified console lets you manage network and security settings, software updates and other applications for both the network and connected mobile devices and makes it easy to add new local and wireless sites.

### Continually Enforce Your Wireless LAN Security

Avalanche MC lets you set and continually enforce all network and security configurations, including SSID, WEP, LEAP, WPA and 802.1X parameters. It also detects rogue access points and client devices, protecting the network from unauthorized equipment and malicious intrusions. What's more, Avalanche MC gives you automatic WEP key rotation and centralized access control lists to extend your network security policies.

### A Powerful Software Distribution Engine

With Avalanche MC you can create packages for distribution to large numbers of mobile devices across multiple sites and regions. In addition, you can target devices based on key criteria such as device model, make, location, and more! You'll be able to execute custom scripts — both pre and post installation — therefore ensuring maximum flexibility for upgrade and package installation.

### Ultimate Protection for Mobile Devices and Data

You can protect your mobile devices and the data on them, even when they are away from your wireless network. Using the optional CE Secure plug-in, user authentication is added to each device, together with rules which can encrypt or remove data when devices are lost or stolen.

### Performance Monitoring Plus Remote Troubleshooting

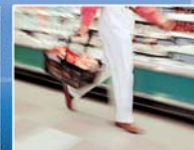
Avalanche MC's intuitive interface provides visual assessments of network conditions — capacity, utilization, signal quality, and more — so you can respond quickly. You'll set specific performance thresholds that trigger alert notices to email lists, pagers or monitoring systems and ENMS systems such as HP OpenView™. Avalanche MC will proactively diagnose, troubleshoot and repair many error conditions without administrator intervention.

When you need assistance, you can get it remotely via the optional Remote Control plug-in. Help-desk operators can now guide an end user through an application or provide technical remedies through remote file system and registry control.

### Centralized Management of LANs and Mobile Devices

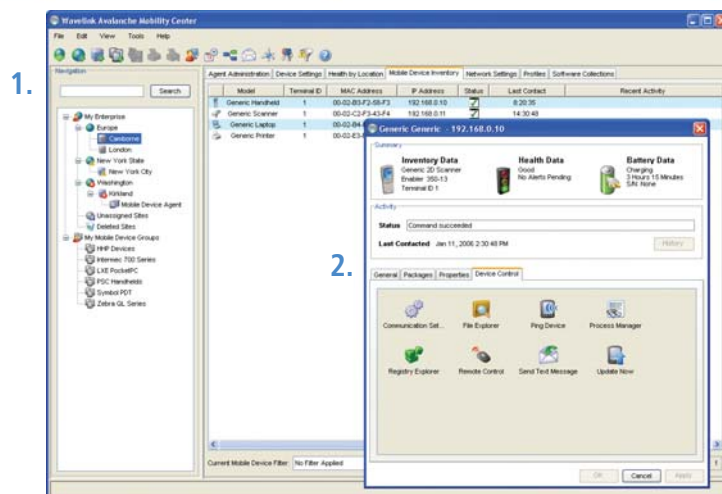
Avalanche MC automates installation and support functions for remote wireless LANs and mobile devices. For example, you can define global updates for network and security configurations, firmware, applications, utilities, drivers and more. Updates can be scheduled and distributed over the air or serially to targeted network infrastructure or mobile devices.

# Avalanche MC



Avalanche MC provides a clear, complete view on the state of your wireless access point and mobile device assets. At a glance, the geographical map lets you identify any problem areas and provides information to the cause of the change in state.

1. The flexible architecture allows you to easily manage large, distributed wireless LANs from one central location. Define global access point and mobile device policies and distribute them quickly from the global console.
2. View detailed information on each managed device, such as wireless settings and deployed packages. Perform diagnostic operations, including remote control and file system editing.



## Key Features

**Flexible Navigation** - Visualize and monitor your organization's entire wireless LAN from a central management console, including remote sites and locations. A geographical map visually renders the alerts and events together with a prioritized event viewer covering important aspects of the network and mobile device health.

**Flexible, Distributed Architecture** - Avalanche MC allows you to distribute the management services (agents) to remote locations by making them as close as possible to the devices being managed. This minimizes LAN or WAN overhead and provides optimal use of the network resource. In addition, Avalanche MC client devices make intelligent use of their connections, adjusting automatically to the available bandwidth.

**Profile Based Configuration** - Create global templates defining network and configuration settings and apply them to groups of access points and mobile devices in multiple geographic areas in a few simple steps, eliminating labor intensive, repetitive tasks.

**Proactive Mobile Device Data Protection** - With an optional plug-in, Avalanche MC is able to extend to protecting a device and its data, even when away from the network. CE Secure adds both user authentication and facilities to apply encrypt or destroy policies for files and directories when a device is vulnerable.

**Comprehensive Troubleshooting Tools** - Avalanche MC constantly monitors your wireless infrastructure and proactively remedies many common problems without administrator intervention. In addition, mobile devices may be remotely diagnosed through an optional Remote Control plug-in. End-users may be tutored through an application, or for faults a remedy may be applied including file and device registry restoration. Sessions may also be recorded and replayed for common issues.

**Remote Site Deployment and Management** - To better manage access points and mobile devices in remote locations, Avalanche MC can centrally define and deploy configuration and management policies, eliminating the need for costly on-site installation, configuration and ongoing maintenance.

**Advanced Scheduler** - Automates critical tasks to effectively manage a large, distributed wireless LAN, such as agent deployment, software package deployment and firmware distribution.

**Access Rights Management** - Define and control to what degree your IT staff can manage your wireless LAN. The User Manager allows you to define Administrative, Read/Write and Read Only privileges. With the optional CE Secure plug-in this is further extended to include user authentication for mobile devices, including integration with 3rd party authentication systems, such as Active Directory.

**Automatic Alert Notification** - Instantly be alerted to critical events. Alert profiles can be created to notify you of specific events that require your attention, such as network resource failure or security threats and automatically be notified via e-mail or a pager whenever the network event occurs. Alerts can even be forwarded to other ENMS management systems, such as HP OpenView™ or CA Unicenter™.

**Advanced Statistics and Reporting** - Historical graphs of network activity can be generated based on statistical information gathered from the wireless LAN. Statistics such as usage activity, total number of packets, collisions or errors, can be charted to identify performance issues and trends that allow IT managers to optimize network performance.

Gain visibility right down to individual mobile devices by retrieving individual device reports on installed software, asset / inventory information and the currently active configuration.

## Product Benefits

**Cut Costs and Boost Productivity** - Avalanche MC is designed to reduce the administrative effort required to operate and support your wireless network and mobile devices. Key functions help boost mobile-user productivity by enhancing application, device and network reliability. Cut costs too by minimizing the need for site visits caused by issues that can be remedied remotely.

**Accommodate Present and Future Devices** - Avalanche MC accommodates legacy, current and future devices giving you a flexible path for growth. Avalanche MC supports the leading access points and mobile devices from all major vendors, including the following platforms: DOS, PalmOS, CE 3.0, CE 4.x, CE 5.x, PocketPC 2002, 2003 and Windows 2000/XP.

## System Requirements

### OS Requirements

Windows 2000 SP4, Windows Server 2000, Windows Server 2003 or Windows XP

### Deployed Services (Agents)

Pentium III, 1.0 GHz+ / 512MB RAM / 100 MB Disk Space

### Central Database and Console

Minimum: Pentium IV, 2.8 GHz / 1GB RAM / 40GB hard disk

Recommended (based on 5000 managed devices): Xeon 3.0 GHz or equivalent / 2GB RAM / Dual 70GB Ultra SCSI drives (RAID)

Please contact Wavelink for recommendations for your specific installation.



11335 NE 122nd Way, Suite 200 Kirkland, WA 98034 USA  
Sales and Support: 1-888-697-WAVE (9283)  
International: +1-425-823-0111 UK/EMEA: +44-870-351-8564  
[www.wavelink.com](http://www.wavelink.com)