

# Warehouse Labeling Solutions

Label solutions which offer customization for any application

## Effective warehouse operations

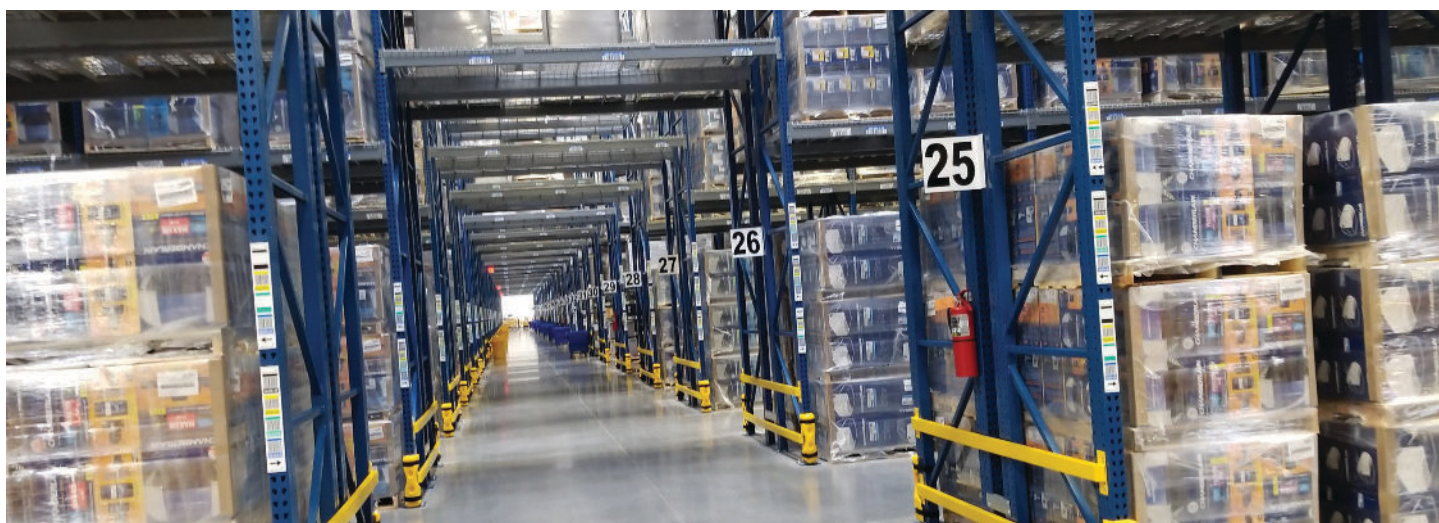
Implementing a warehouse-based permanent identification bar code solution may appear to be fairly straight-forward. However, experts know there are many variables and many opportunities for productivity successes and failures. Warehouse racks vary in size, shape and texture. There may be bins, cages, totes and shelving units. Additionally, pallets and cartons are constantly on the move throughout the facility.

An automated warehouse operation requires that each location and item have a unique bar code that is read correctly, every time it is scanned. Decisions regarding the label itself will have a direct effect on reliability, durability and adhesion, as well as the facility's operational efficiency and project costs. Label dimensions, bar code design, use of color, scanner depth of field, interaction with software, desired volume, resources and timeline must be carefully mapped to ensure a successful project implementation.

That's why today's most efficient warehouse operations count on Peak Technologies Label Specialists for their entire pre-printed bar code label, tag and sign needs. Only Peak has the technical expertise and knowledge to guide you through the multitude of label considerations so crucial to the success of your project.

## Business Benefits

- Professionally designed labels
- Highest quality base stocks, adhesives & over laminates
- Guaranteed workmanship
- Cost effective alternative to in-house printing
- Single source solution of printers, scanners, RF, mobile and labels



## Tailored solutions to your business requirements

When implementing a successful warehouse labeling solution, Peak carefully considers your unique business requirements as well as numerous crucial environmental factors that can affect the project's success, including:

### Warehouse Labeling Solutions

- Physical layout (variety and size of rack to label)
- Numbering of locations
- Barcode symbology desired/required
- Human readable to print on label
- Scanner model
- Scanning distance and angle



### Variety of applications in unique environmental conditions:

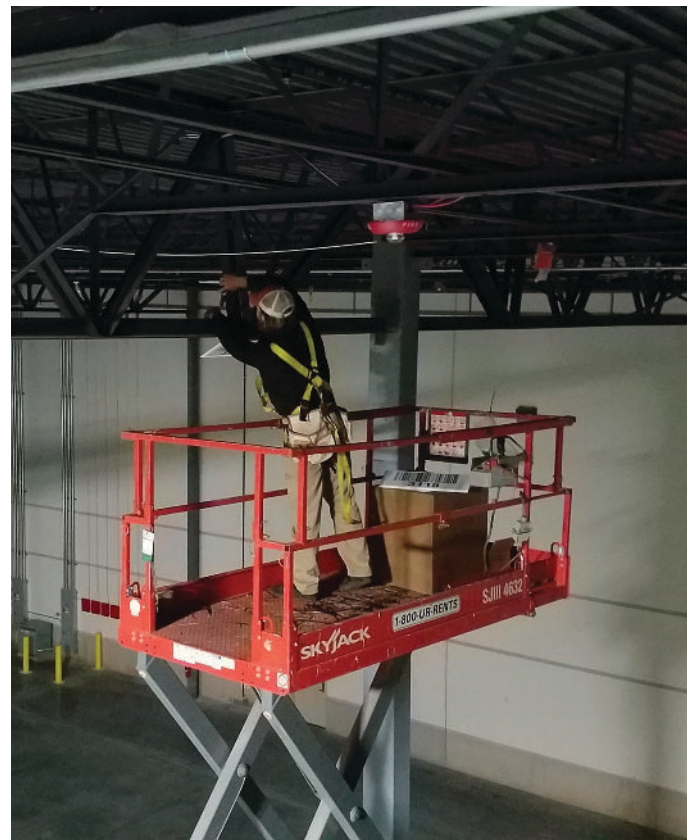
- Temperature
- Humidity
- UV light
- Chemicals
- Cleaners/solvents
- Oil/grease
- Dirt/dust



## Peak label consulting services

Peak Label Specialists can assist in creating the most efficient labeling solution by considering items such as:

- Size and symbology of bar code (code 38, 128, 1 2 of 5, etc.)
- Size and configuration of label (direct contact to 100+ ft. scan)
- Color coding/use of arrows
- Physical mounting of labels
- Custom logos/graphics
- Base materials (paper, poly films, retro, others)
- Adhesives (variety of permanent & removable)
- Mounting/assembly (plastic/metal signs & magnets)
- Breakdown by locations sequence for easy installation



## Contact Us

Order online or contact us today!

☎ 1-888-492-6346

✉ [info@peaktech.com](mailto:info@peaktech.com)