



Your Blueprint for Enterprise Safety Solutions

Mitigate Risk of Infection and Keep Social Distance During and After COVID-19





A Note from Peak Technologies

Now more than ever, communities across North America are relying on the intricate logistics of enterprise operations to keep essential products delivered to their door. From food to pharmaceutical supplies, while many other businesses are operating at a lesser capacity, some enterprises are in overdrive.

But as essential as it is for enterprise logistics to keep moving throughout and after the coronavirus pandemic (COVID-19), it can't be done without the health and safety of our workers on the front lines. At Peak, our mission is to deliver enterprise solutions for a more digitally-connected supply chain and mobile workforce through a team of committed, innovated problem solvers. That commitment doesn't stop at technology.

Through collaboration with customers and partners, and learning from our own successes and those of others, we would like to share the experiences and resources that are [helping to mitigate the risk of infection](#) for those who can't work from home.



Peak customer service engineer Dave Wittrock, working to service equipment in the field.



Enhanced Solutions for Physical Distancing



Implement Safety Labels and Signage

While verbal communication is an essential part of delivering safety expectations, it can't be the only method of delivery. Visual reminders that communicate expectations and help employees remember to maintain a six-foot physical distance from others are essential.

Safety labels and signage ensures that your employees are following social distance and hygiene guidelines. Peak can assist in implementing [floor print solutions](#) that provide durable, non-slip, full-color stickers for your warehouse, manufacturing, or retail premises to help your employees maintain compliance with COVID-19 safety regulations.

Should your operation prefer to print your own safety labels on-demand and on-site, Peak can assist with implementing the [OKI Signage Solution](#). This solution provides the speed and flexibility to print in-house in minutes via the OKI C844dnw color laser printer. Easy-to-use with a variety of connectivity options, the solution includes 4 toners and a print media starter pack and print templates.





Mobile Solutions for Distancing and Contact Tracing

Organizations of all types [require new tools](#) for providing safe social distancing including:

- **Alerting employees when they become too close to one another.**
- **Tracing employee contact throughout the organization.**



WorkSafe Powered by Kutir Mobility

WorkSafe™ has been developed to support an optimized return to the “new normal” business reality. Built on an established and proven cloud-based platform, the solution provides at-a-glance facility-based views for supervisors and managers which helps [bring real-time awareness](#) to which employees are too close to others and provides safe workspace guidance as well as contact tracing reporting, should the need arise.



Newcastle Systems Mobile Powered Carts

While Newcastle Systems mobile powered carts have always been a staple of an efficient receiving dock within warehouse operations, the new normal has them being leveraged as [personal work stations for safer operations](#). Not only does this limit the equipment being shared by critical staff, but it helps staff to maintain safe distances from one another.



Protective Shields

Reduce the spread of germs while mitigating risk to your employees with HP protective shields. Ideal for applications where your employees need to have customer-facing interactions, these shields are easy-to-install, durable, easy-to-clean and can be configured in a variety of sizes. Quickly and easily [add a protective barrier](#) that keeps both employees and customers safe during the check-out process of essential supplies.



Temperature Verification Solutions

The safety of your employees and guests is paramount. [Temperature verification solutions](#), combined with access control and other safety solutions, prevent any employee or guest with a fever from entering a facility, and ultimately help stop the spread of infections.

Thermal Scanning Kiosk Solutions

Our temperature verification solutions are fast and secure, taking the temperature of employees and guests and providing them access to a facility in under two seconds. Temperature verification solutions from Peak are appropriate for nearly any indoor environment — warehouses, distribution centers, terminals, retail stores, hotels, hospitals, casinos, restaurants, schools, and office buildings — and feature:



No Touch/Contactless



Fast Screening Times



Facial Recognition

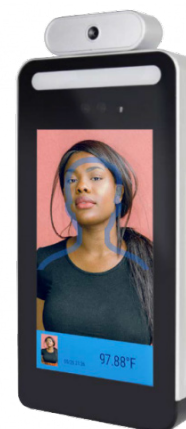
Personnel Management Kiosk

The Personnel Management Solution from Meridian provides check-in and temperature verification capabilities and can be easily configured for user facial recognition. This solution is designed to protect employees and guests' health and safety by preventing anyone with a temperature from entering a facility. It can be equipped with alarms that will sound when those with a temperature above the predetermined threshold and those without approved access, attempt to enter.



GT2 Temperature Sensing Kiosk

The GT2 Temperature Sensing Kiosk from Janam allows businesses to protect their employees' and guests' health easily. Equipped with infrared thermal imaging, the GT2 is able to quickly and accurately read body temperatures of every individual attempting to enter a facility. The kiosk, available in pedestal, countertop, and wall-mounted formats, then prevents anyone with a fever, or not wearing a mask, from entering the facility.



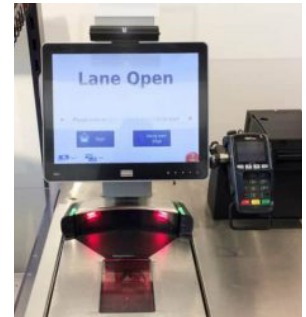
Sanitizing Solutions

In order to control the risk of exposure, it is imperative to [maintain a clean working environment](#). It's realistic to expect to spend more time cleaning and disinfecting centralized areas and equipment and it is vital to plan labor shifts to accommodate.



Consider a UV Light Solution

For handheld mobile devices and tablets, consider implementing a [UV light solution](#) for quick and complete sanitization, ensuring clean hands are touching bacteria-free devices every time, all the time. UV light solutions have been proven to kill at least 99.9998% of MRSA within a 20-second sanitization cycle without the use of device-damaging chemicals.



Hand Sanitizer

As lines ramp up for increased production, it's more important than ever that employees have adequate time to not only wash their hands but have [hand sanitizer available](#) for intervals when in between washings. Our partnership with Responsible Hand Sanitizer ensures that when you buy, you do so with confidence that 99.9% of germs are killed.



Tracking and Tracing

From food processing to pharmaceutical manufacturing, it's essential for supply chain managers to have full visibility and tracking capabilities throughout the entire process, from pickup, to delivery, and everywhere in between. Equipped with the right mobility and third-party software solution, your operation can ensure fast and accurate results across every step of the supply chain.



Specimen Tracking

Peak has partnered with Medical Courier Elite (MCE) to offer a comprehensive cloud-based software solution designed specifically for [medical lab specimen tracking](#) and courier route management utilizing barcodes & GPS. The MCE software optimizes the specimen collection process to ensure the traceability of specimens from pickup to lab delivery, and performs courier routing.





Labeling Solution for Test Tubes/Vials

In order to evaluate test results reliably and quickly, test tubes must be labeled uniquely. The [AXON 2 printing solution](#) by Cab is a perfect fit for labeling tubes individually as a manual workstation or as an integrated solution in sample processing systems.



Contactless Delivery

The ability to provide last mile delivery that is contactless is crucial. Whether your products are being delivered to a consumer residence or a retail location, contactless delivery keeps both consumer and driver safe. Peak in partnership with the [FarEye SERVE platform](#), can instantly and remotely implement this software seamlessly and efficiently, ensuring that essential products remain in-stock and delivered on time.



IM2 Click & Collect

eCommerce has become a vital part of the omnichannel retail environment, and with customers looking to receive ordered items with shorter and shorter turnaround times you need a solution that connects your online orders and your retail stores. With the [IM2 Retail Click & Collect](#) module from Peak, you can embrace a true multichannel mix, enabling you to track web orders, receive & put away goods, notify customers, track handovers and much more.



Optimizing Remote Access



Hotspots

As some workers have had no choice but to transition to working from home, businesses have been met with a varying degree of remote connectivity among their workforce. To combat this, Hotspots blend software, hardware and network data services to securely provide reliable Internet connectivity to areas where connectivity may be limited or non-existent. Peak can quickly implement Hotspots into your networking solution allowing employees who are in different geographical locations securely maintain a reliable connection to get the job done.



Keeping Employees Safe and Healthy

The coronavirus pandemic has brought about a new normal in the way we manage our daily responsibilities. Keeping employees healthy is paramount to ensuring your operations stay healthy and running smoothly, while we all do our part in stopping the spread.

Contact us or call us at 1-888-492-6346 to learn more about our COVID-19 solutions and how we can help you.



10330 Old Columbia Rd, Suite 200
Columbia, MD 21046
1-800-239-4472 • info@peaktech.com