

REDUCE COMPLEXITY. REGAIN YOUR EDGE.

Introducing Mobility Edge

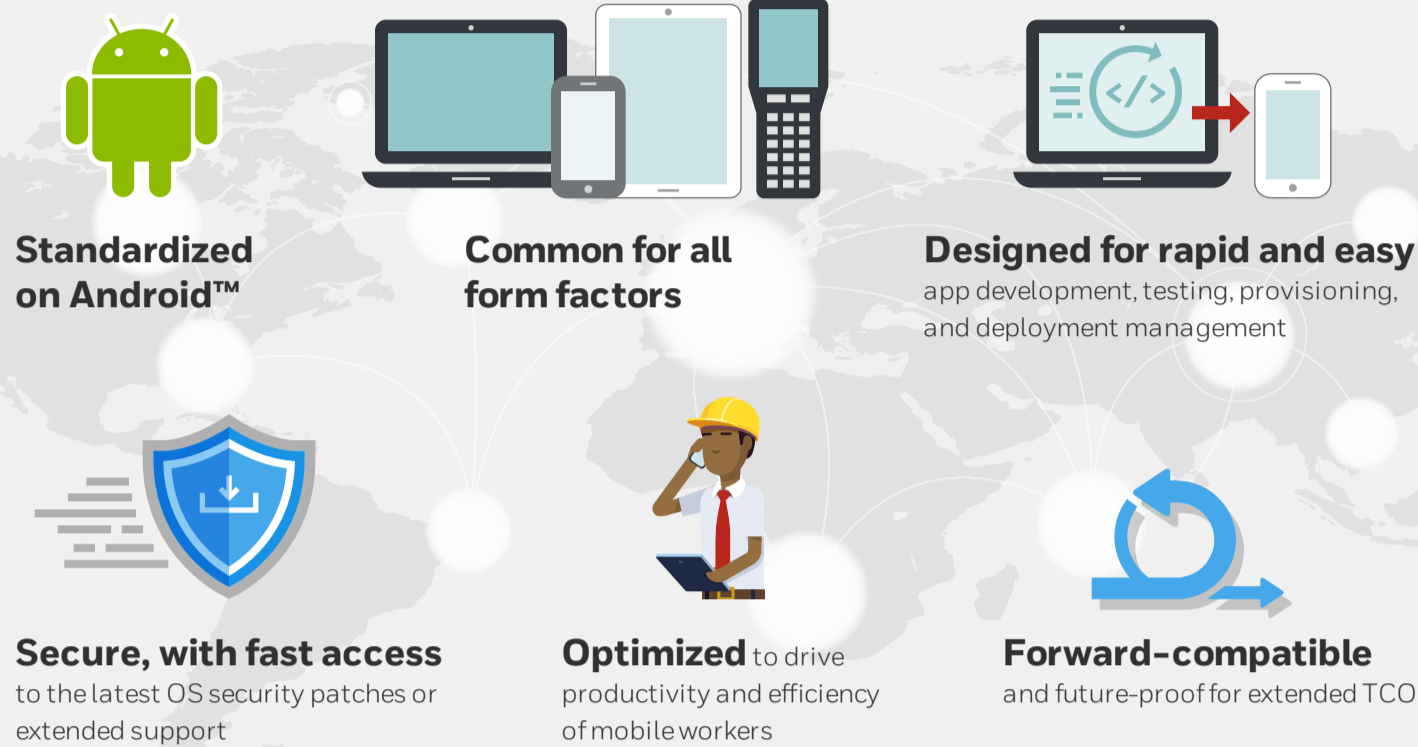
As seen in the *10 Key Challenges of Enterprise Mobility*, Honeywell's customer research revealed that our customers need a better, easier way to deploy and manage their mobile solutions.

How have we helped them solve this challenge?

By taking a completely new approach to enterprise mobility.

To Accelerate the Edge, Rethink the Core

After talking to our customers, we completely rethought our approach to the challenges of supporting a mobile workforce. We quickly realized that no new simple technology upgrade was enough. Our customers needed something more comprehensive and dynamic – a mobile platform that is:



INTRODUCING MOBILITY EDGE

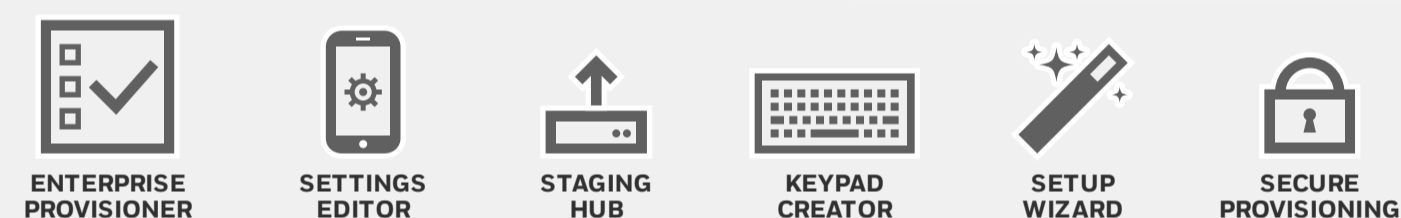
A New Unified, Dynamic Mobile Platform from Honeywell

Mobility Edge™ helps companies **overcome complexity** to build, manage, and deploy mobile solutions across the enterprise – **faster, with less risk, and less cost.**

Accelerate Deployments

VALIDATE ONCE. DEPLOY EVERYWHERE. FASTER, EASIER, AND AT A LOWER COST.

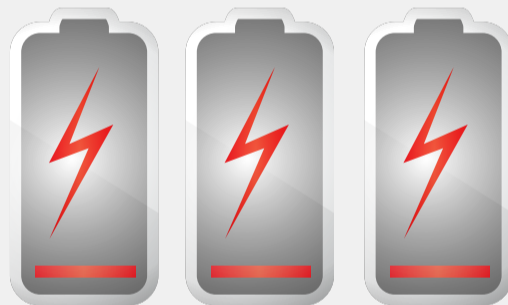
A rapid provisioning suite makes mobile deployments faster, easier, and lower cost. Validate new apps and updates once, then deploy across all form factors – instead of a burdensome process for each different device.



Optimize Performance

PRODUCTIVITY-OPTIMIZING TOOLS. FASTER DATA CAPTURE AND SECURE, ENHANCED WORKER COMMUNICATIONS.

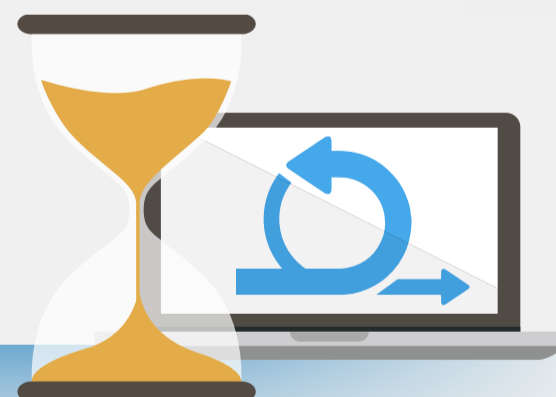
With Mobility Edge, you can drive device performance for greater efficiency and worker productivity. Powerful, embedded tools help workers capture data faster and communicate easily and securely.



Extend Lifecycle

FORWARD-COMPATIBLE. FUTURE-PROOF. REDUCING TCO AND MINIMIZING HEADACHES.

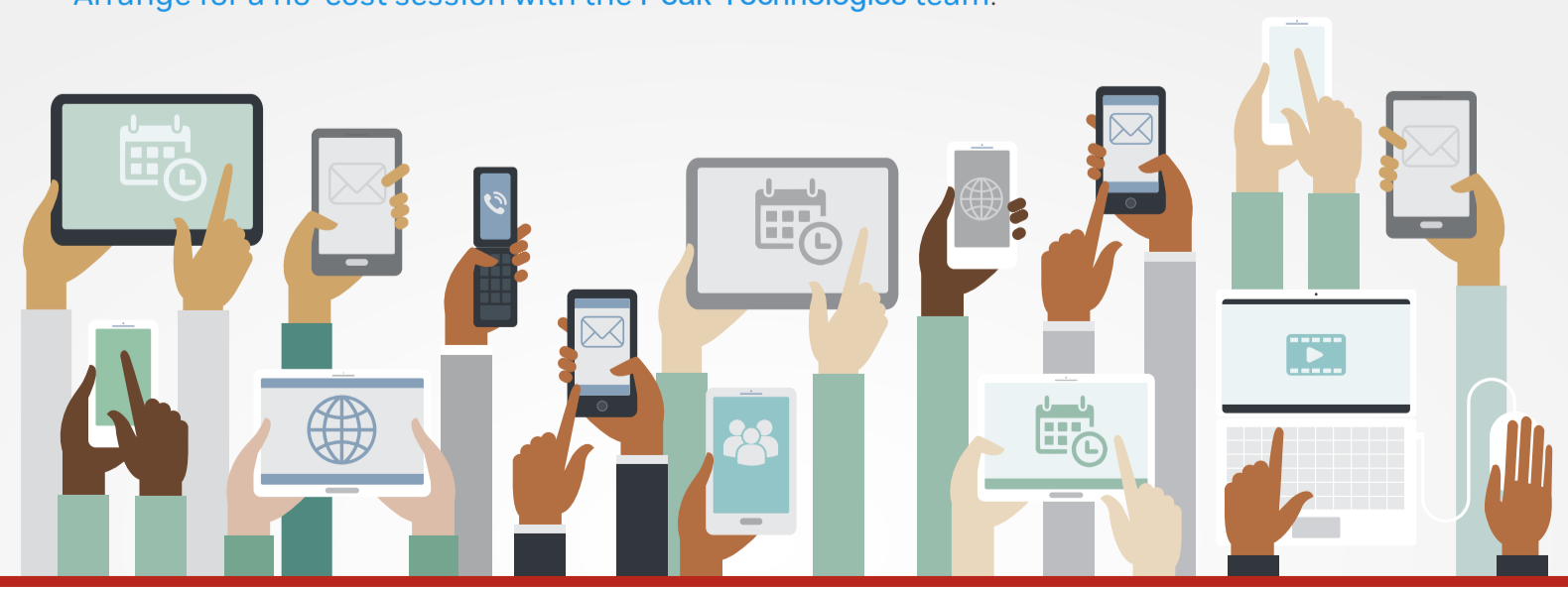
With enterprise lifecycle tools, you can count on greater reliability and a longer lifecycle, with hardware designed to support more operating system upgrades – through Android Q – than any competitive product can promise.



Get Started with Mobility Edge

Take the next step toward bringing simplicity to your mobile deployments.

[Arrange for a no-cost session with the Peak Technologies team.](#)



800-204-6425
www.peaktech.com



The Android robot is reproduced or modified from work created and shared by Google and used according to terms described in the Creative Commons 3.0 Attribution License.

Mobility Edge Infographic Introduction | Rev A | 02/18
© 2018 Honeywell International Inc.



THE POWER OF CONNECTED